



Cadwork Installation Guide

Release 30

Cadwork Informatique Inc.

Aug 16, 2023

CONTENTS:

1	General	1
1.1	System Requirements	1
2	Clean Installation	2
2.1	Download	2
2.2	Language Selection	2
2.3	Client Information	3
2.4	Installation Type Selection	4
2.5	Installation Destination	6
2.6	End User License Agreement	7
2.7	Installation Summary	8
2.8	Component Download	9
2.9	Component Installation	10
2.10	Completed Installation	11
3	Upgrade from V29 to V30	12
3.1	Download	12
3.2	Installation	12
4	LiveUpdate	13
4.1	Version Selection	13
4.2	Installation Complete	14
4.3	Settings	15
4.4	Automatic Updates	16
5	Cadwork Start	17
5.1	Support	17
5.2	Directories	18
5.3	Licence	19
5.4	Configuration	20
5.5	Backups	21
5.6	Printers	22
5.7	Install	23
5.8	Network Licence	24
5.9	Extensions	25
5.10	LiveUpdate	26
5.11	Client Information	27

GENERAL

1.1 System Requirements

Cadwork is a resource intensive application. The following system requirements should be considered a bare minimum for optimal Cadwork performance.

Processor

Recent Intel i7, i9.

Graphics Card

Dedicated NVIDIA card with 4GB VRAM.

Operating System

Cadwork requires a 64-bit operating system. The following operating systems are supported:

- Windows 10
- Windows 11

Memory

16GB RAM.

Network

A high-speed internet connection for installation and technical support.

CLEAN INSTALLATION

Follow this section if you are installing Cadwork V30 on a computer that does not have any other versions of Cadwork installed.

2.1 Download

Download the Cadwork installer from our website; <https://cadwork.ca/en/support/downloads/> and launch it to start the installation.

2.2 Language Selection

Select the installation language. This will affect the installed content.

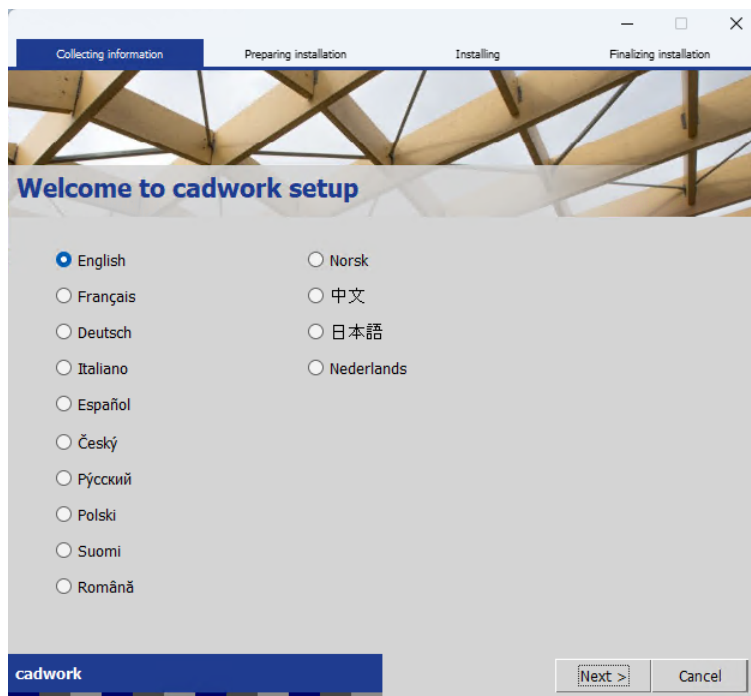
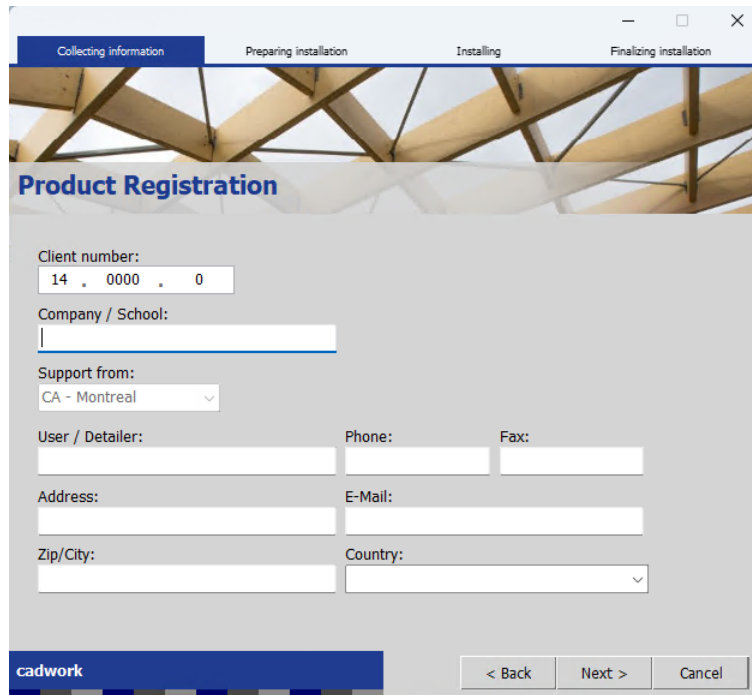


Fig. 1: Language Selection

2.3 Client Information

Fill the fields with the correct client information. Some of this information might have been provided by Cadwork.



The screenshot shows a software installation window titled "Product Registration". At the top, there are four tabs: "Collecting information" (selected), "Preparing installation", "Installing", and "Finalizing installation". The background of the window features a close-up image of a wooden roof truss. The form contains the following fields:

- Client number:** A text box containing "14 . 0000 . 0".
- Company / School:** An empty text box.
- Support from:** A dropdown menu with "CA - Montreal" selected.
- User / Detailer:** An empty text box.
- Phone:** An empty text box.
- Fax:** An empty text box.
- Address:** An empty text box.
- E-Mail:** An empty text box.
- Zip/City:** An empty text box.
- Country:** A dropdown menu.

At the bottom left is the "cadwork" logo. At the bottom right are three buttons: "< Back", "Next >", and "Cancel".

Fig. 2: Client Information

2.4 Installation Type Selection

Select the desired installation type.

Standard

Use this option to perform a standard Cadwork installation.

Offline Install

Use this option to perform a standard Cadwork installation and download the files from a local Update Server.

Viewer

Use this option to perform a Viewer only installation. This allows viewing of regular Cadwork files without a licence. Note that no support is given by Cadwork unless a prior arrangement is made for clients without a valid Cadwork licence and/or maintenance contract.

Lexocad Standalone

Use this option to only install Lexocad.

Update Server

Use this option to perform a Cadwork Update Server installation. This will download the files required to perform an Offline Install on other computers but will not install Cadwork on the Update Server itself.

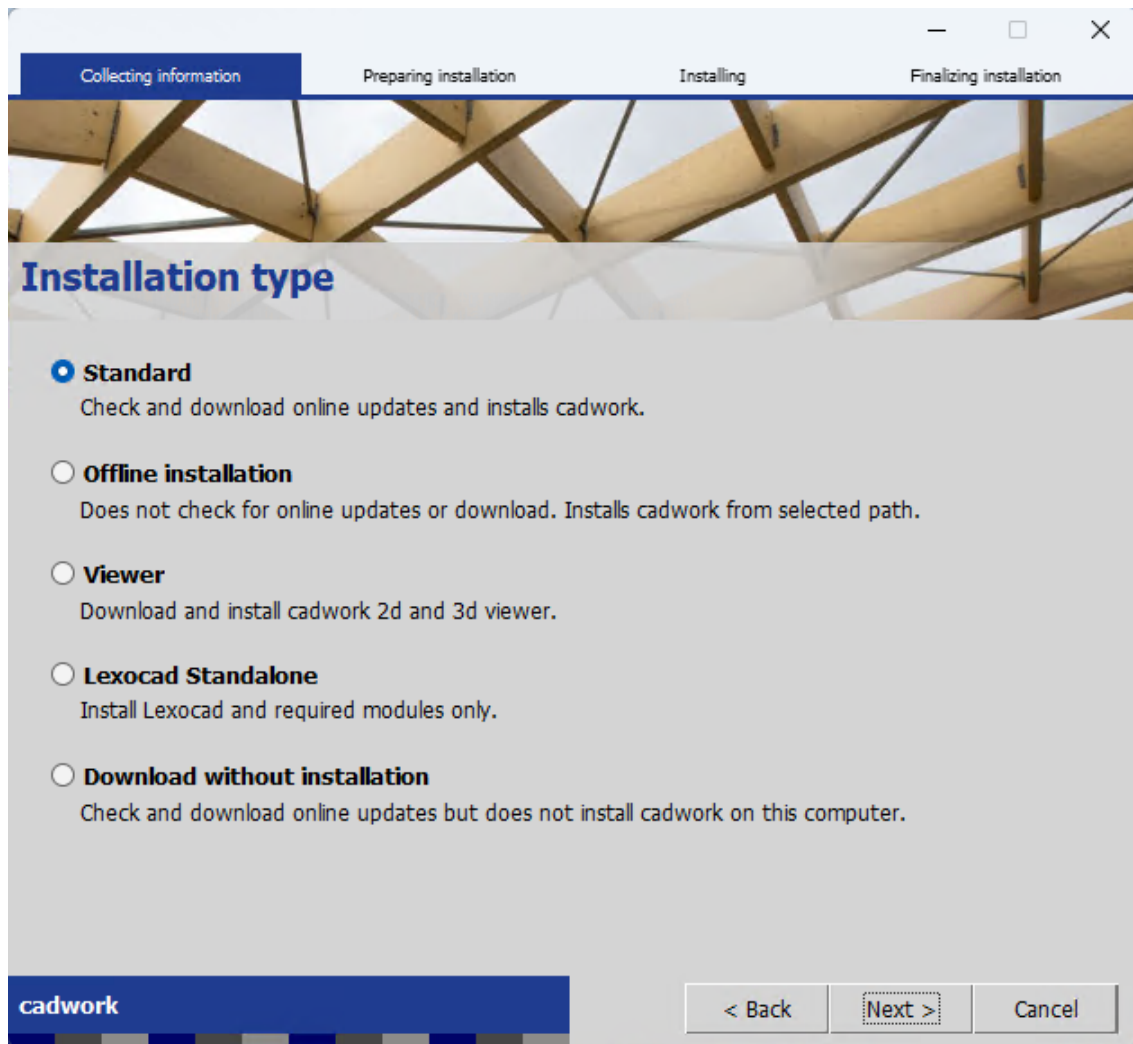


Fig. 3: Installation Type Selection

2.5 Installation Destination

Select the installation destination. Cadwork recommends leave the default options on this screen. Make sure the Update path points to a Cadwork Update Server if performing an Offline Install.

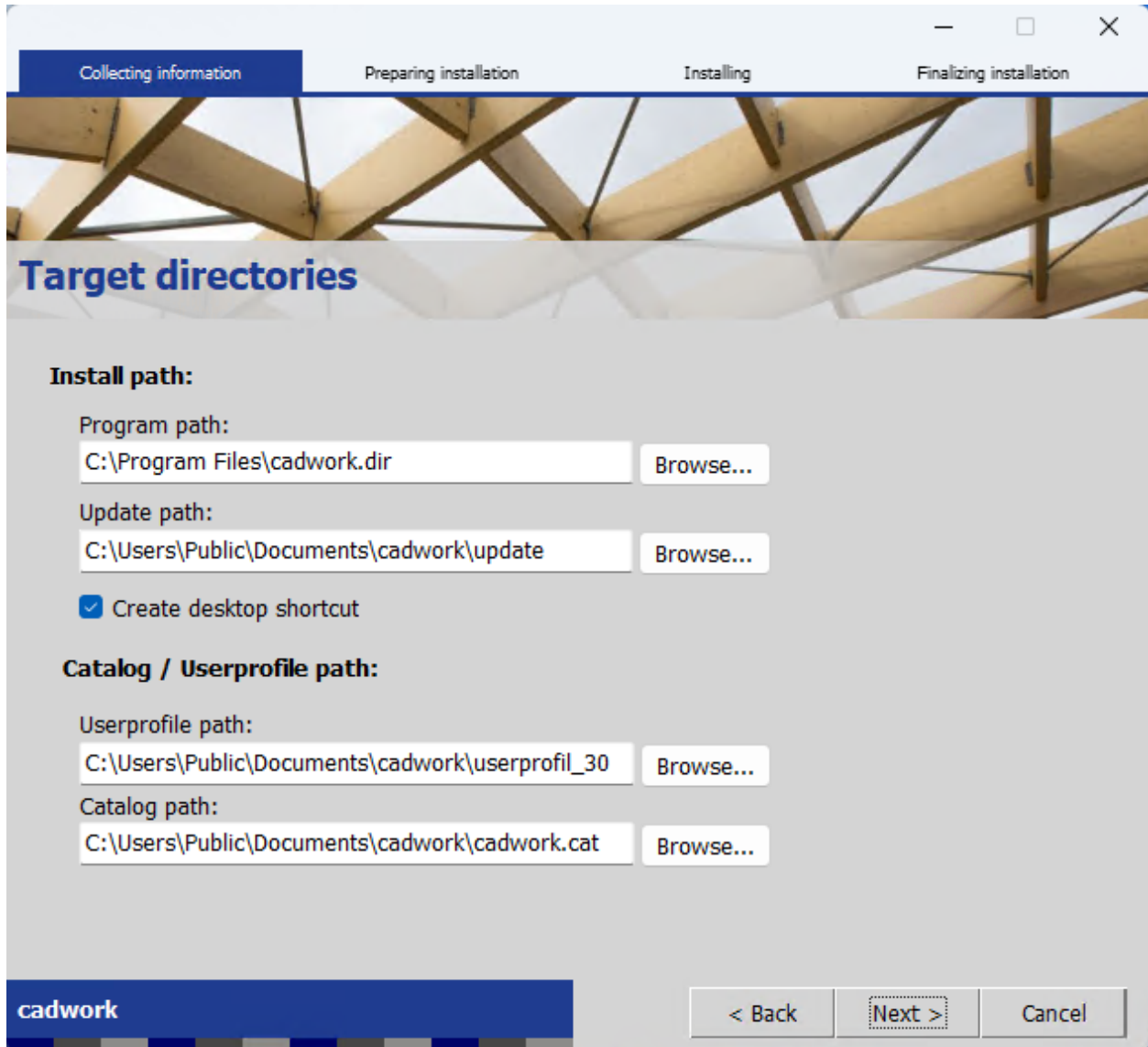


Fig. 4: Installation Destination

2.6 End User License Agreement

Read and accept the End User Licence Agreement.

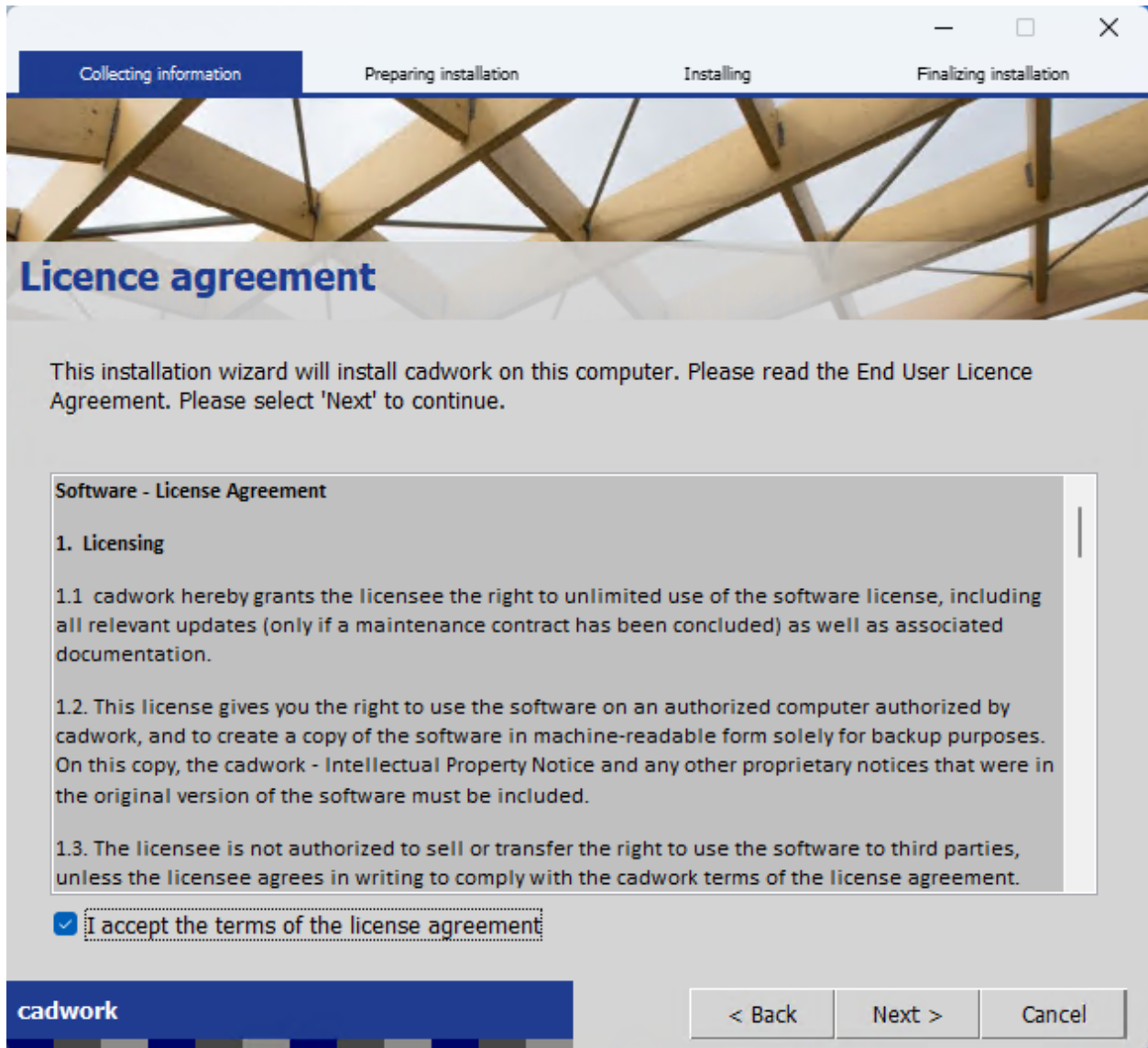


Fig. 5: End User License Agreement

2.7 Installation Summary

Confirm that the installation summary is acceptable.

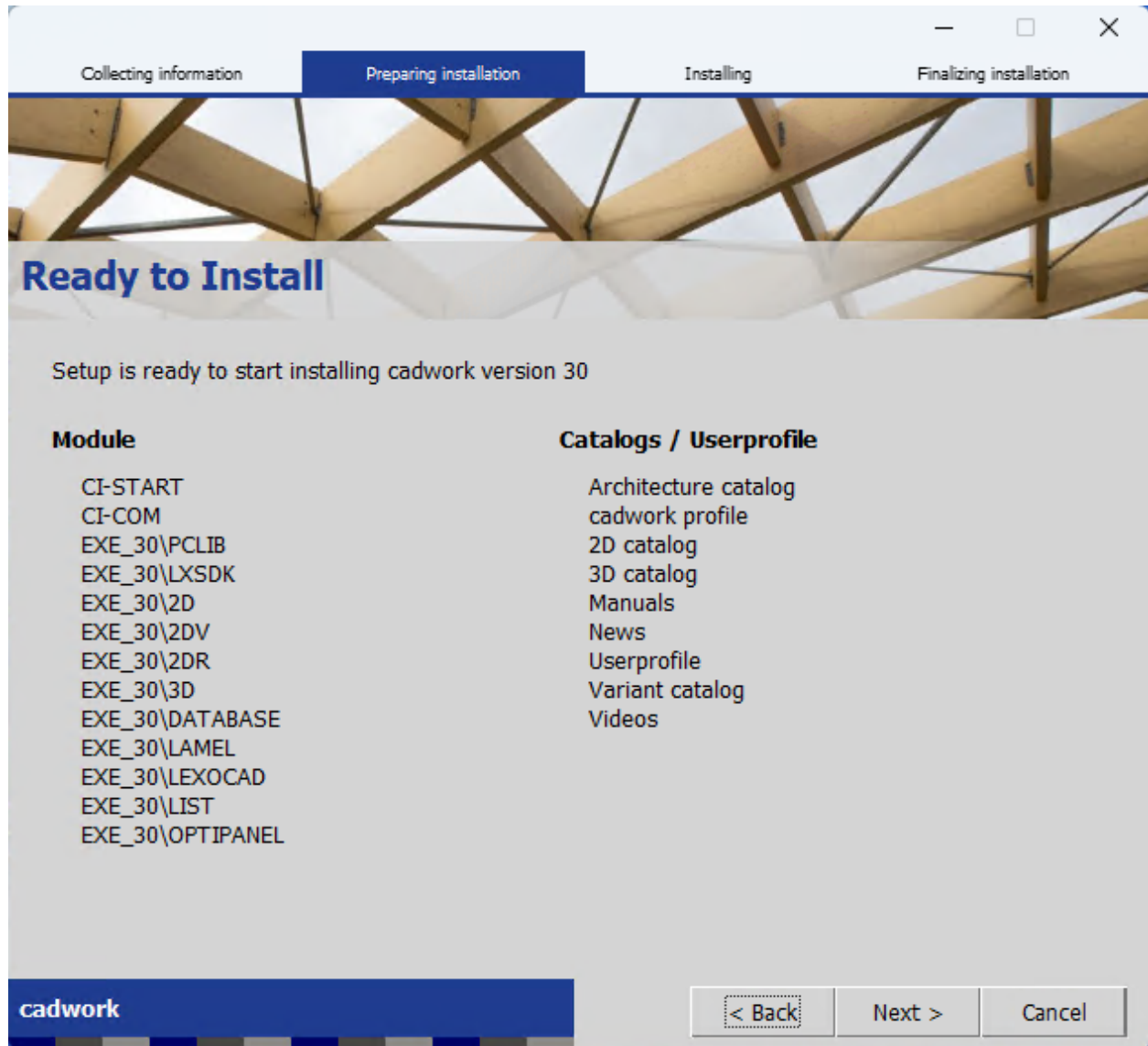


Fig. 6: Installation Summary

2.8 Component Download

All required components will be downloaded.

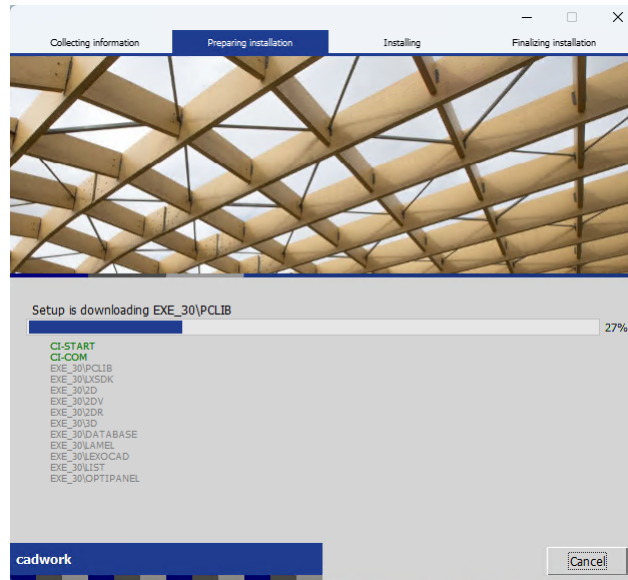


Fig. 7: Component Download

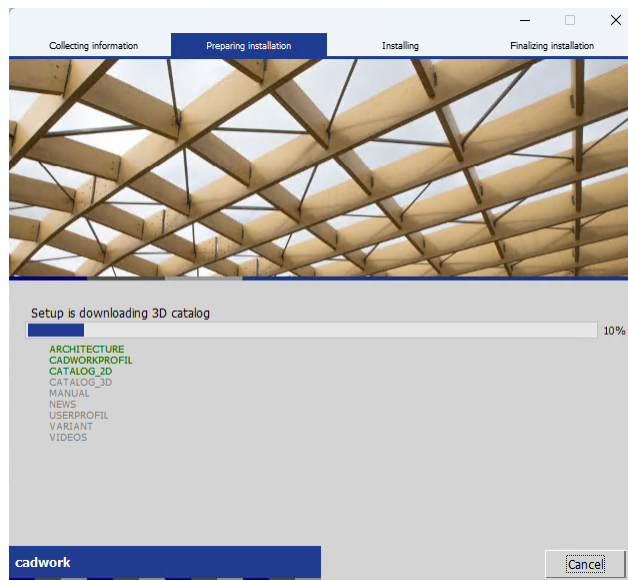


Fig. 8: Component Download

2.9 Component Installation

All required components will be installed.

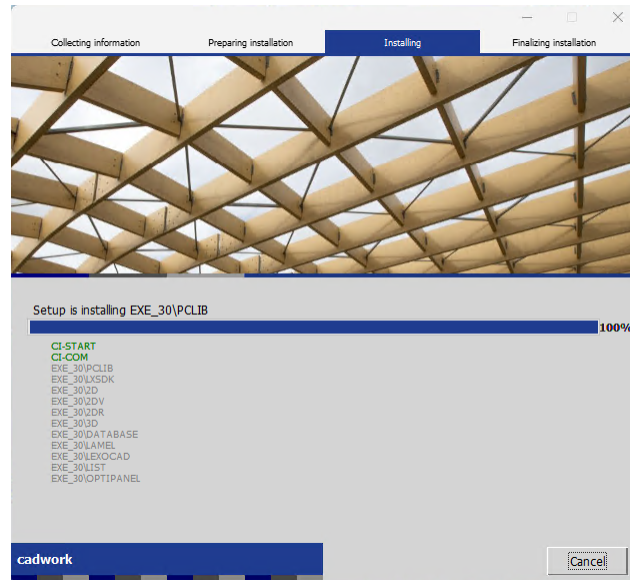


Fig. 9: Component Installation

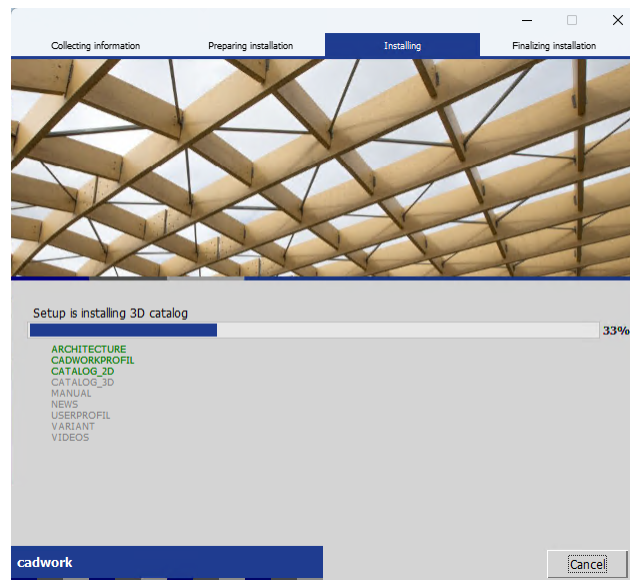


Fig. 10: Component Installation

2.10 Completed Installation

Confirm that the installation did not produce any errors and reboot the computer if asked.

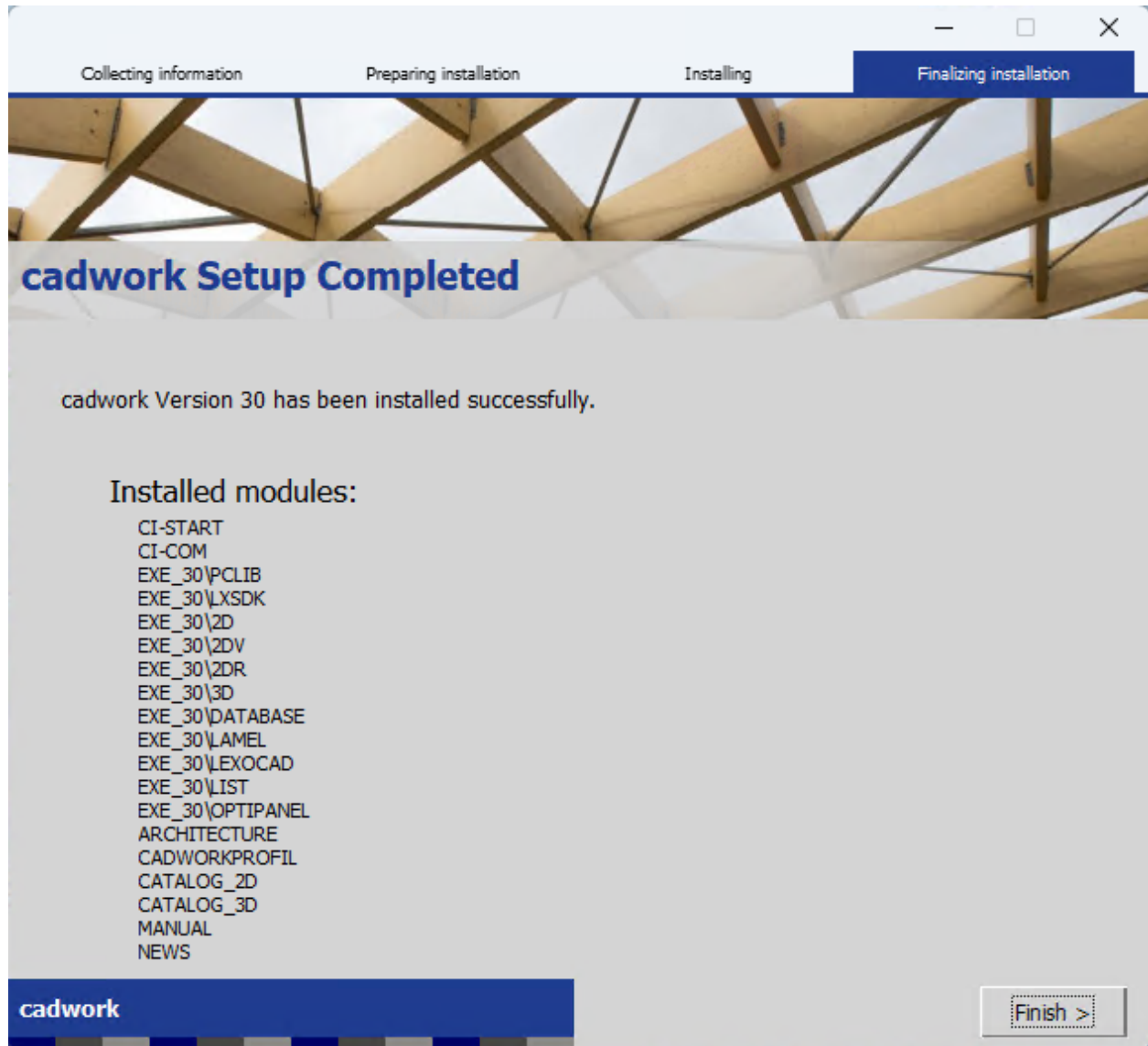


Fig. 11: Completed Installation

UPGRADE FROM V29 TO V30

Follow this section if you are installing Cadwork V30 over V29. Upgrading from a version other than V29 to V30 is unsupported and not recommended.

3.1 Download

Download the Cadwork installer from our website; <https://cadwork.ca/en/support/downloads/> and launch it to start the installation.

3.2 Installation

Follow the clean installation instructions.

LIVEUPDATE

The LiveUpdate program is used to update the Cadwork components to the latest version available.

4.1 Version Selection

Ensure that **EXE_30** is selected on this screen to update Cadwork Version 30. Additional versions may be selected but there is no availability guarantee for updates of versions older than 30.

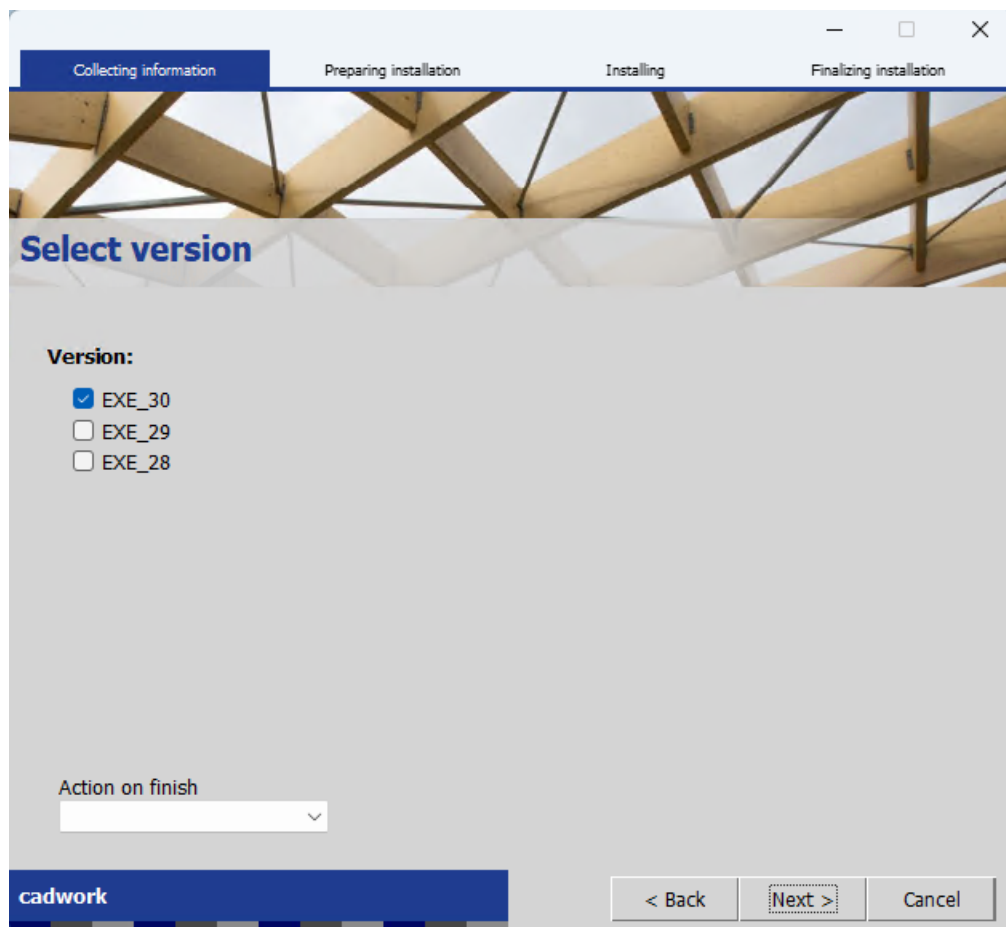


Fig. 1: Version Selection

4.2 Installation Complete

This screen presents a summary of the installation. Depending on the type of installation chosen and the components installed a restart of the computer may be needed.

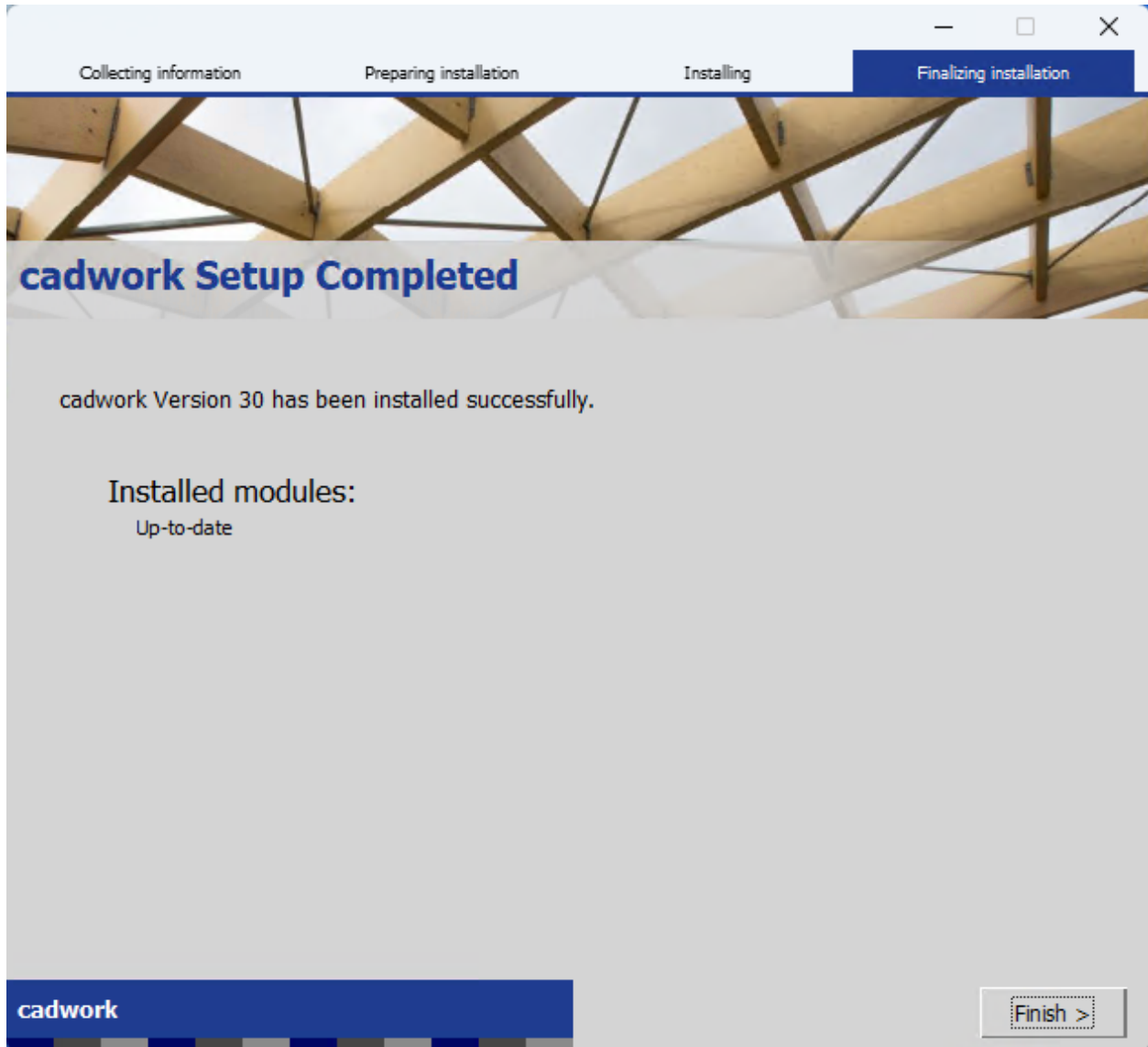


Fig. 2: Installation Complete

4.3 Settings

The LiveUpdate settings page can be used to launch a LiveUpdate or to configure any settings applicable to the LiveUpdate program.

The installation type and update directory path can be configured from the **Settings** page.

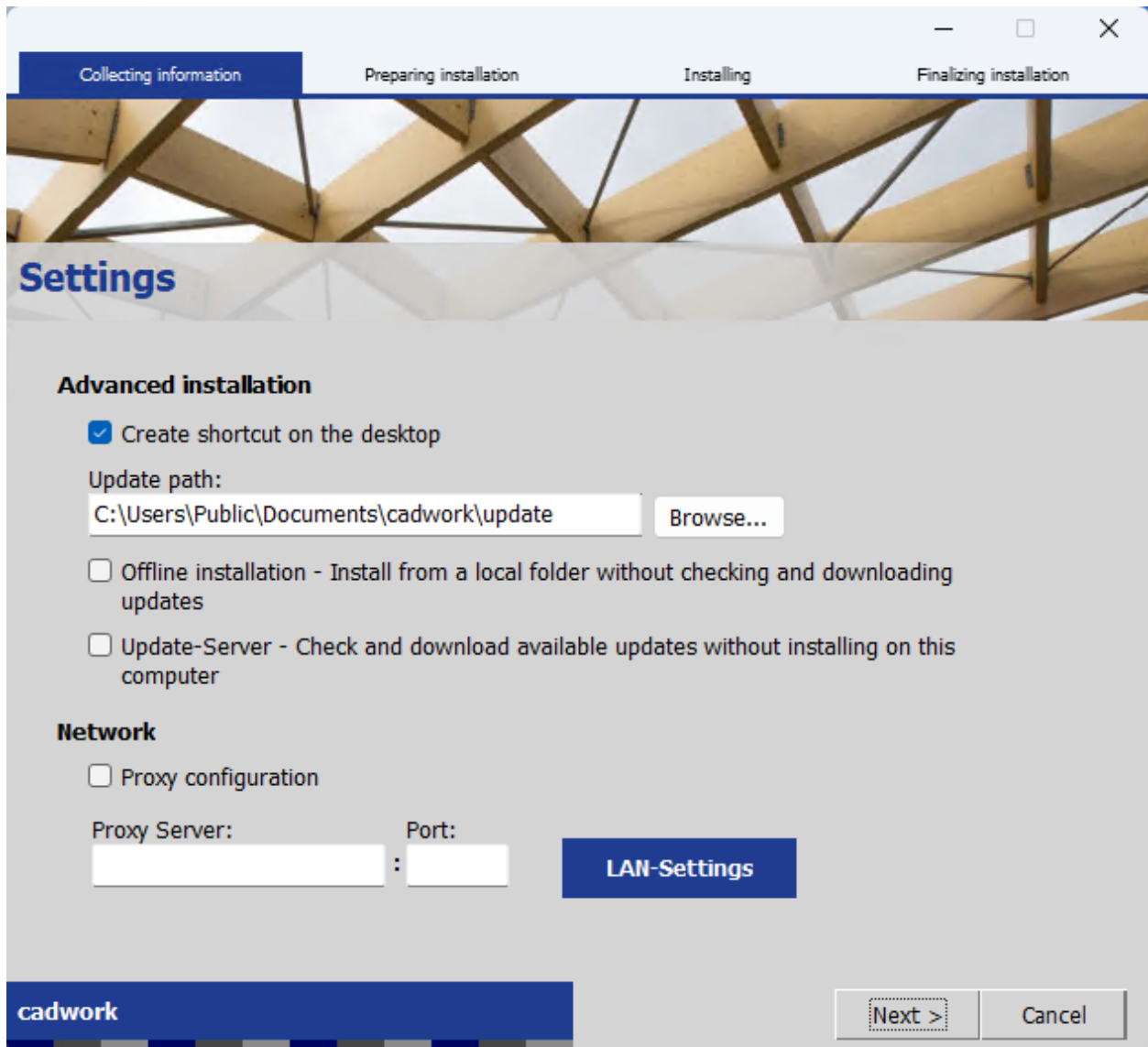


Fig. 3: Settings

4.4 Automatic Updates

The options on this page can be configured to setup the LiveUpdate program to check for updates automatically at a preset time and on a preset day.

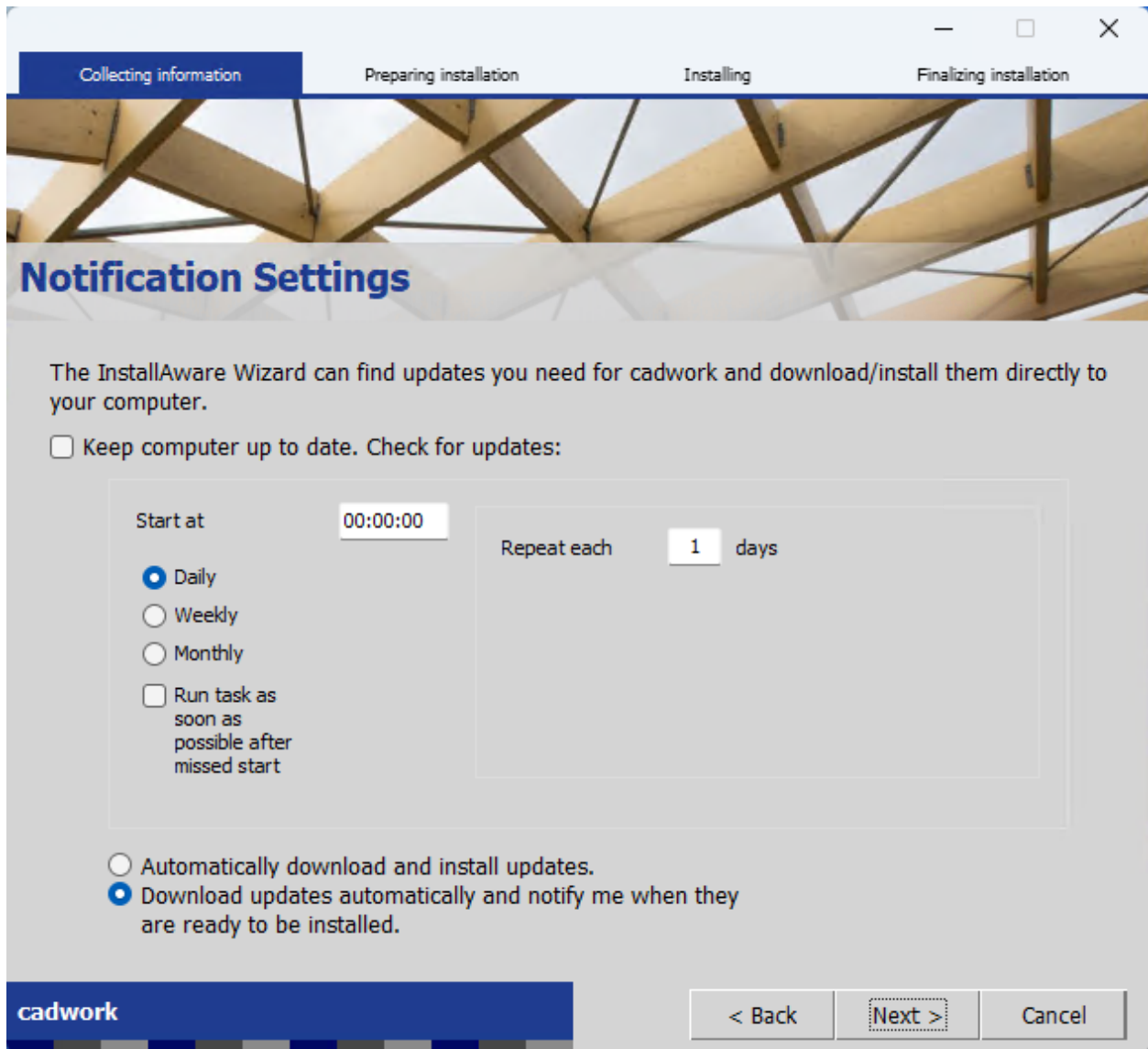


Fig. 4: Automatic Updates

CADWORK START

5.1 Support

Information for technical support can be found on this tab. A link to the **TeamViewer** program can also be found in the lower right area.

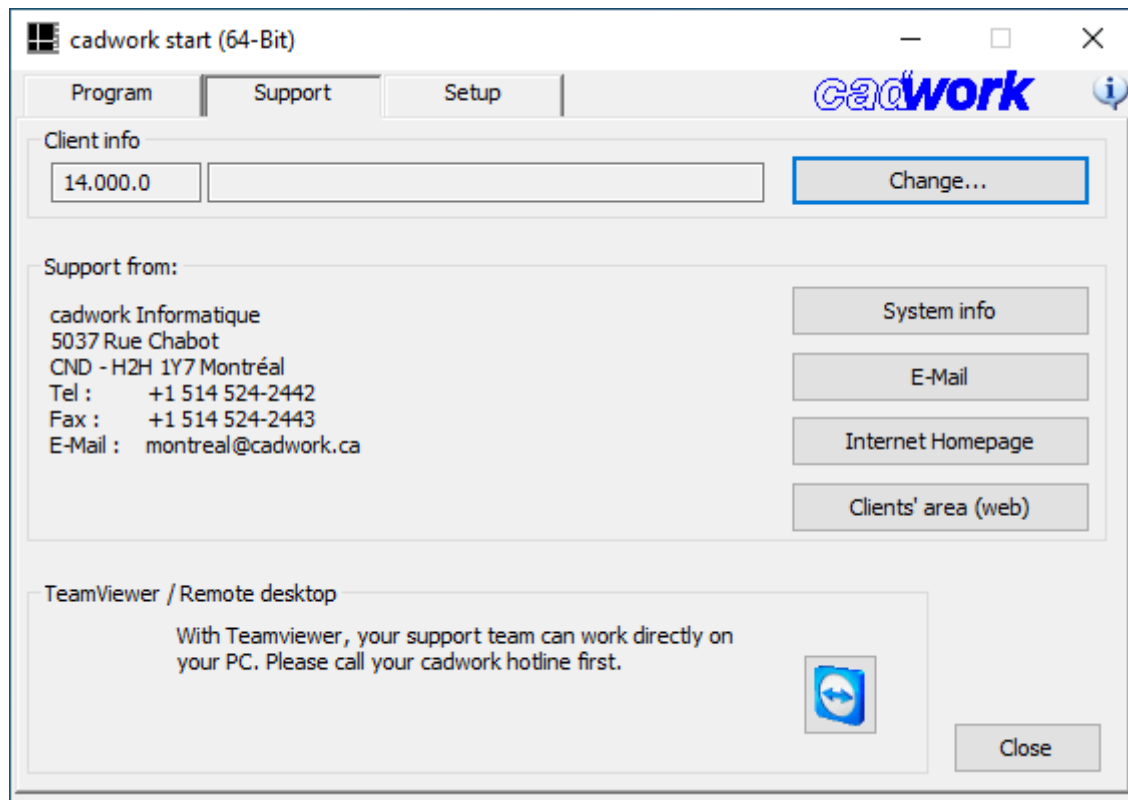


Fig. 1: Support

5.2 Directories

The standard version and the directories used by Cadwork can be setup on this page.

Standard Version

Version of Cadwork that will be used by default.

Catalog Directory

Location of catalog on drive. The location should match the standard version. This can be a UNC path if a network setup is desired.

Userprofil Directory

Location of userprofil on drive. The location should match the standard version. This can be a UNC path if a network setup is desired.

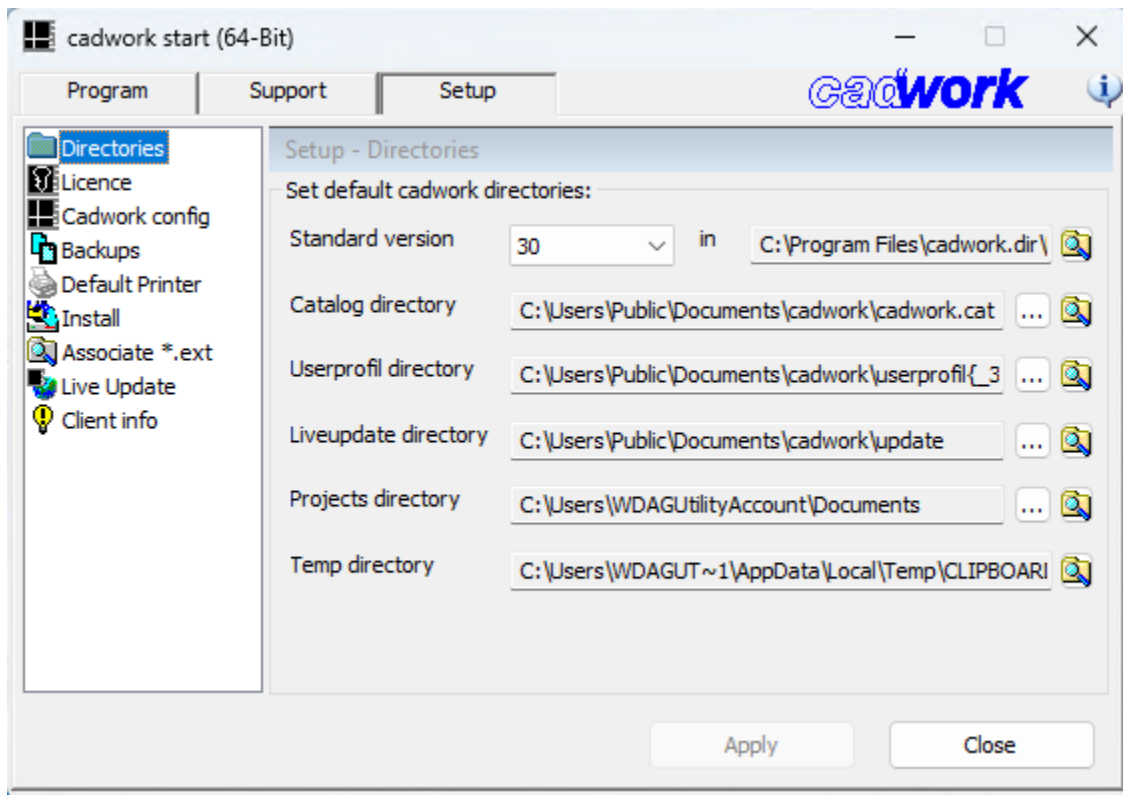


Fig. 2: Directories

5.3 Licence

Clicking on **Download** will download new codes from the Cadwork servers. This can be done when codes are expired or when codes have been updated by Cadwork. Make sure the **licence type** dropdown menu is correctly selected and the **Apply** button has been clicked before downloading codes.

Clicking on **Enter Code** allows the user to manually enter a code or see the current expiration of the active code.

USB Memory ID

Will be displayed if a Cadwork USB dongle is used.

Processor SN ID

Will be used only if a temporary code has been computed for a Processor SN ID by Cadwork.

Computer ID

Will always be displayed but only used if a temporary code has been computed for a Computer ID by Cadwork.

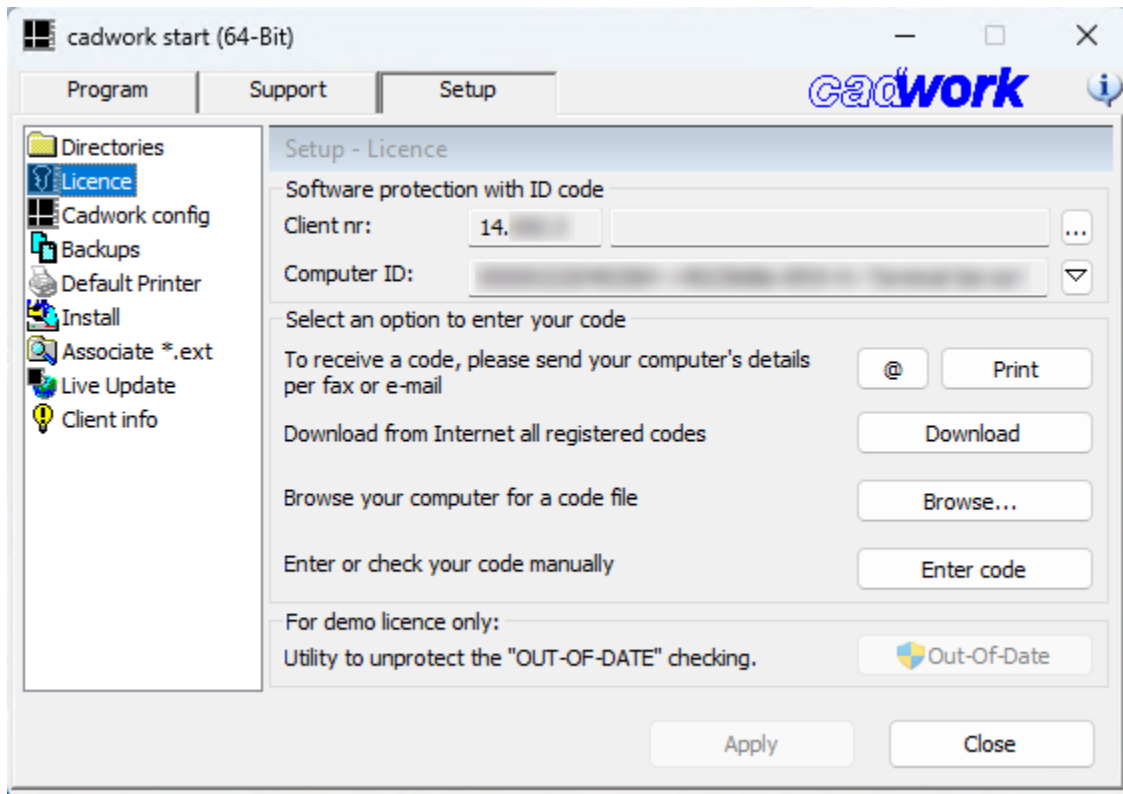


Fig. 3: Licence

5.4 Configuration

The language used by all Cadwork programs can be selected on the configuration tab. The user type should always be set to **Timber**. An option to disable the beep notifications in Cadowk is also available.

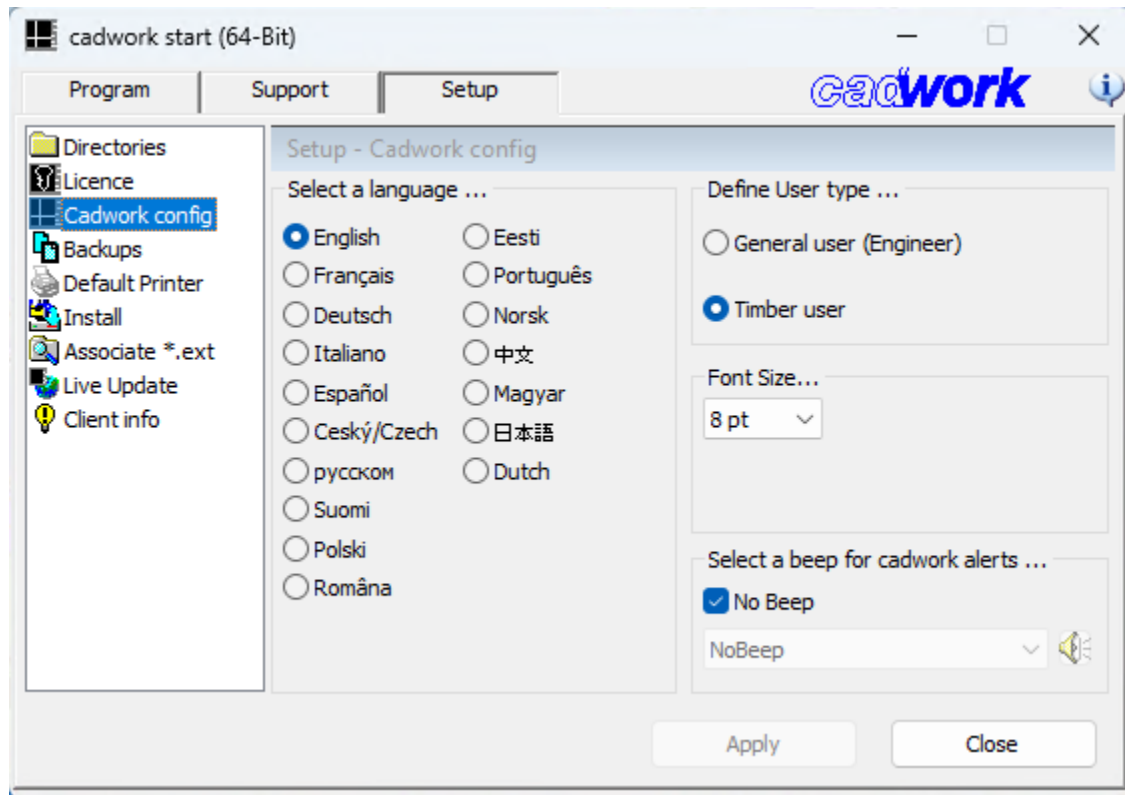


Fig. 4: Configuration

5.5 Backups

Cadwork automatically saves backup copies of the files being worked on. The number of copies and the time interval between copies can be selected on the backup tab. The location of those backups can also be chosen.

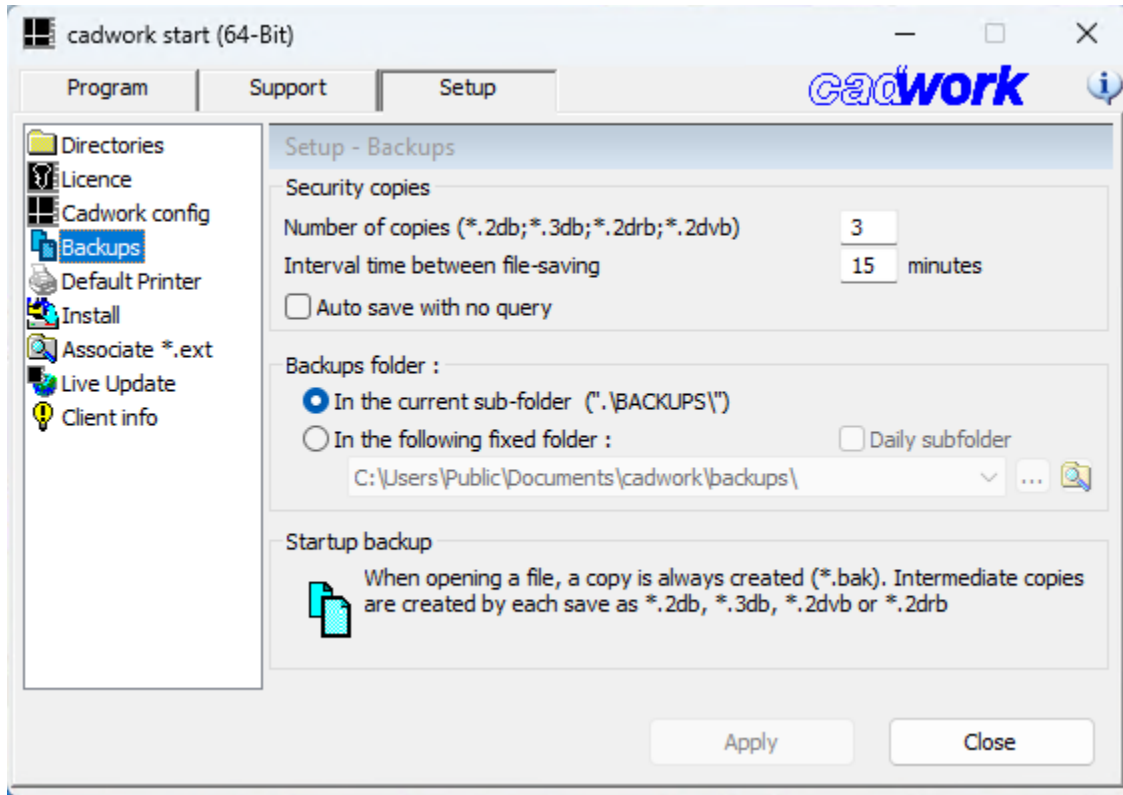


Fig. 5: Backups

5.6 Printers

The default printer used by Cadwork can be selected on the printer tab. You can use **Install PDF driver** to install the **Cadwork-PDF** printer; but this is not mandatory.

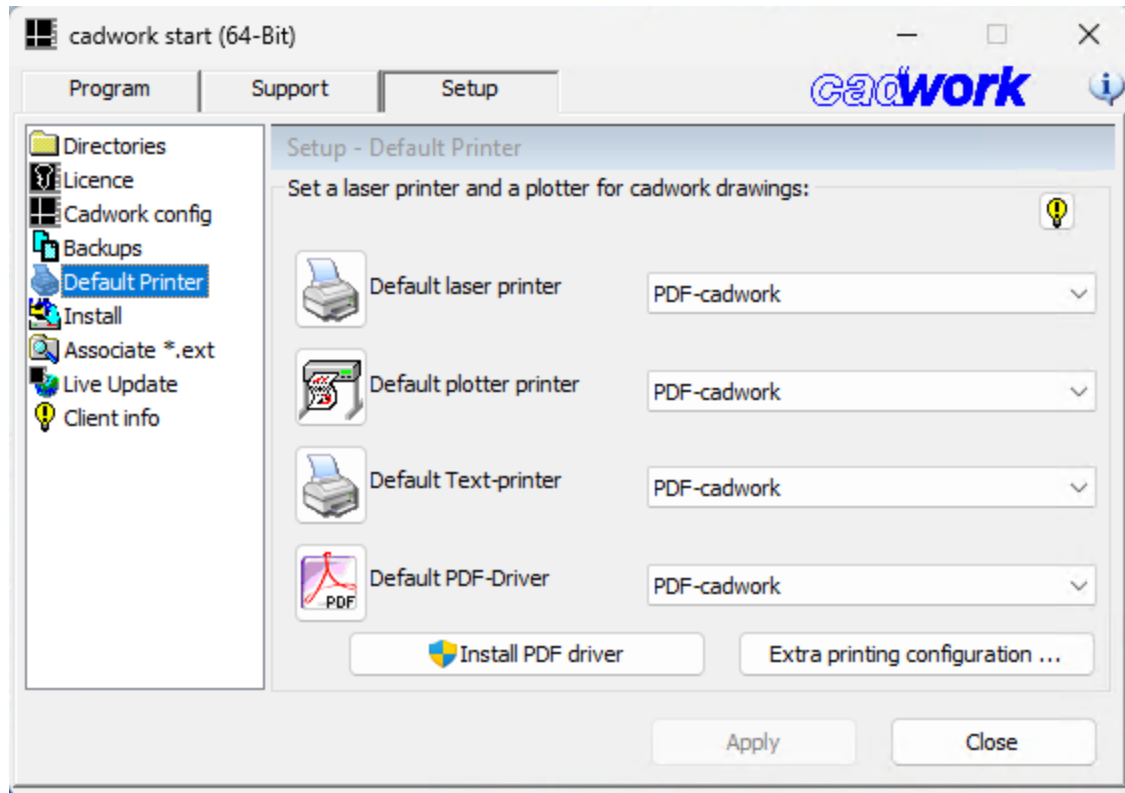


Fig. 6: Printers

5.7 Install

A special driver must be installed if using a purple Sentinel dongle. Clicking on the **Install Dongle** button will install this driver. A reboot is recommended after installation.

The **Network Licence** button can be used to access the related features. See the **Network Licence** section for more details.

The registry options present on this tab should not be used unless directed to by Cadwork.

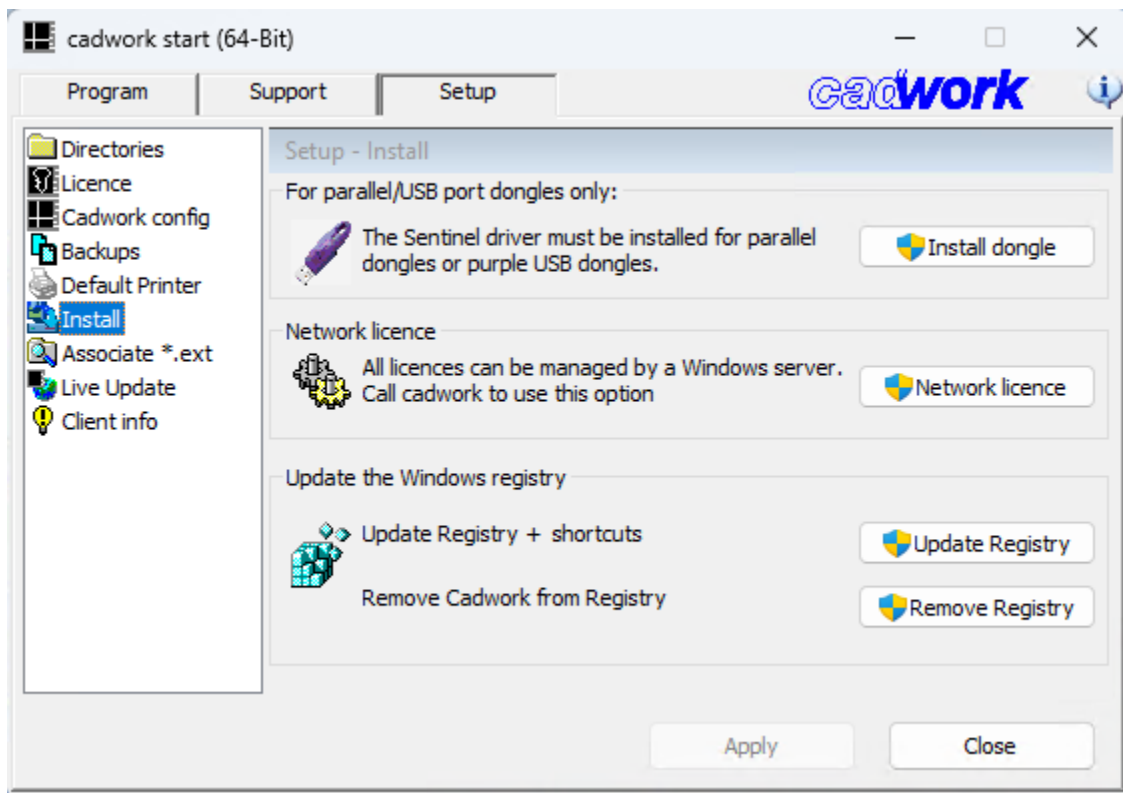


Fig. 7: Install

5.8 Network Licence

A password is necessary to access the network licence. This password will be given by Cadwork when required.

Clicking on the **Install** button will install the network licence service in Windows. Once installed the **Update** and **Remove** buttons can be used to either update the service or remove it.

Contact Cadwork for more information about setting up a network licence.

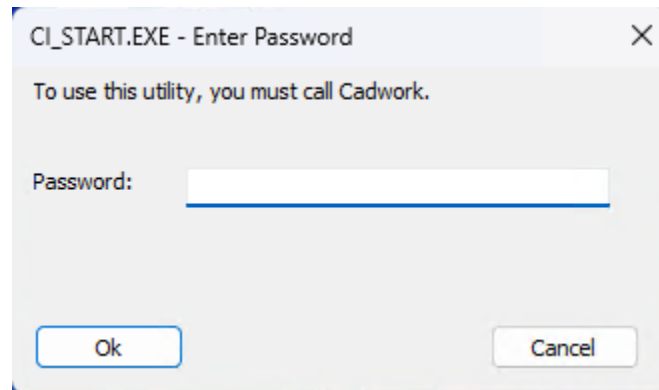


Fig. 8: Network Licence

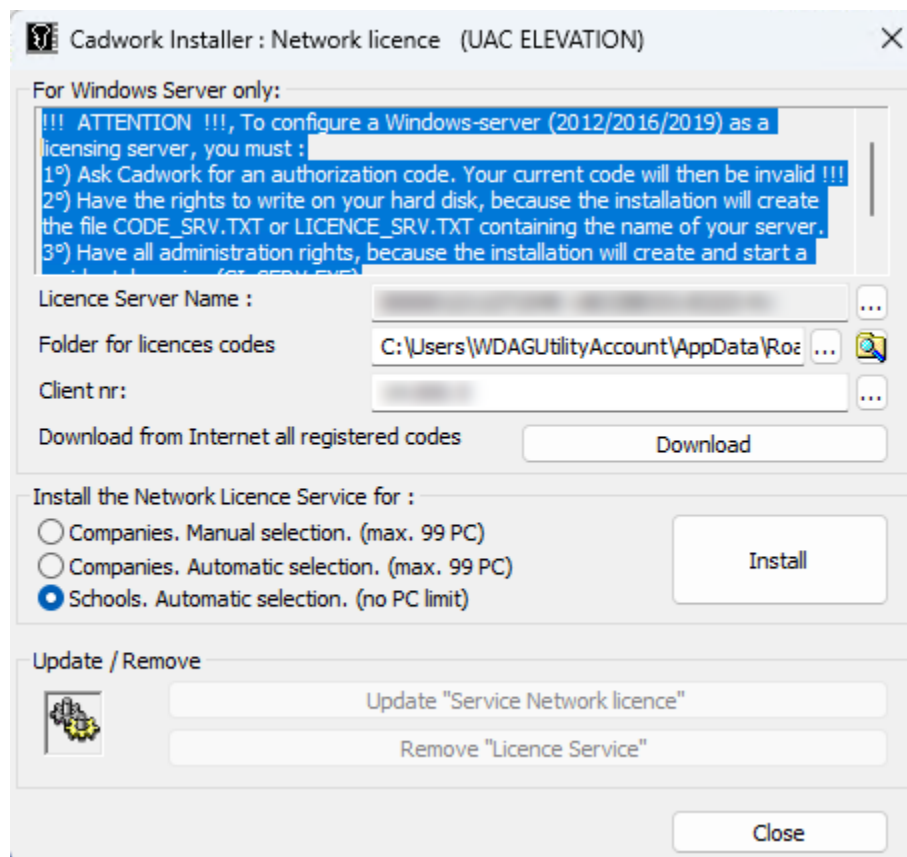


Fig. 9: Network Licence

5.9 Extensions

The extensions tab can be used to configure which file extensions open with Cadwork by default when double-clicked in Windows. This can be useful in the case where another program should be used to open such files.

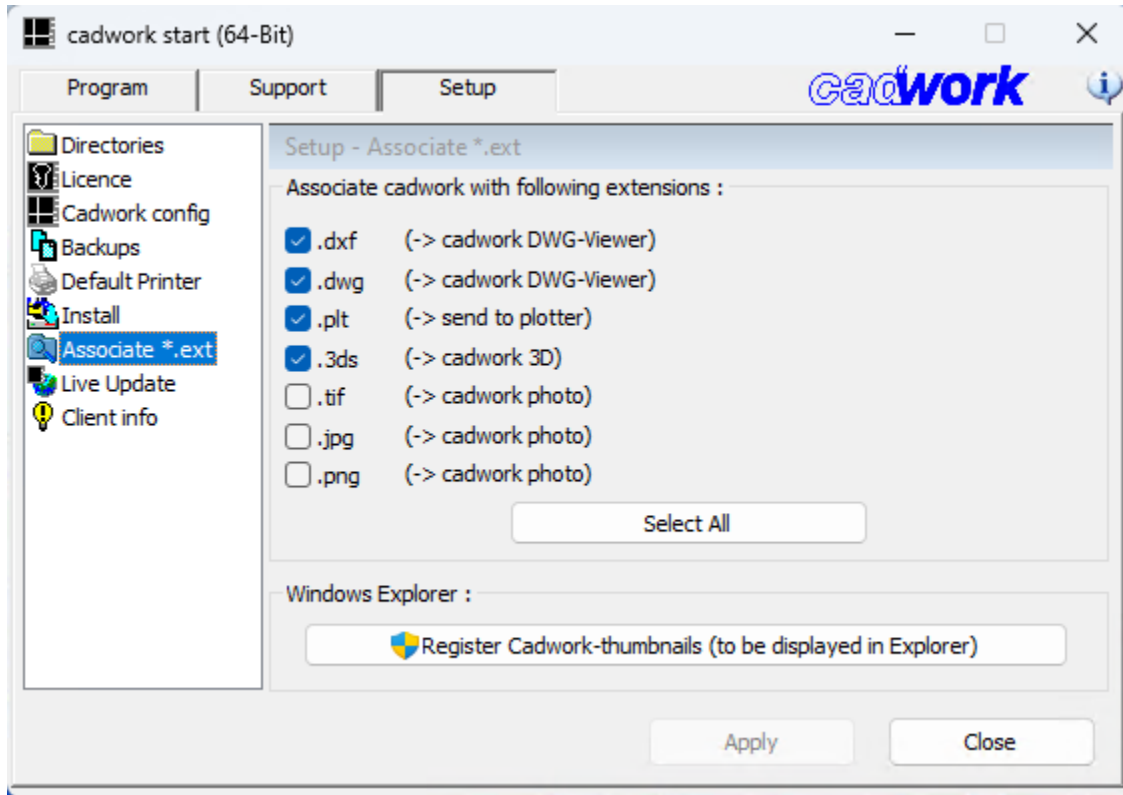


Fig. 10: Extensions

5.10 LiveUpdate

The **LiveUpdate** button can be used to launch the LiveUpdate program to update Cadwork. See the section on **LiveUpdate** for more details.

The **Update Standard Catalogs** button should not be used in normal cases. If updates to catalogs are available, they will be downloaded automatically or prompted to download when running the LiveUpdate.

The **LiveUpdate Settings** button can be used to launch the LiveUpdate settings program. See the section on **LiveUpdate** for more details.

It is possible to create an installation USB stick to install Cadwork on other computers without an internet connection necessary by using the **Make Install USB Stick** button.

The two buttons at the bottom of the tab can be used to access the clients area and the main page on the Cadwork website.

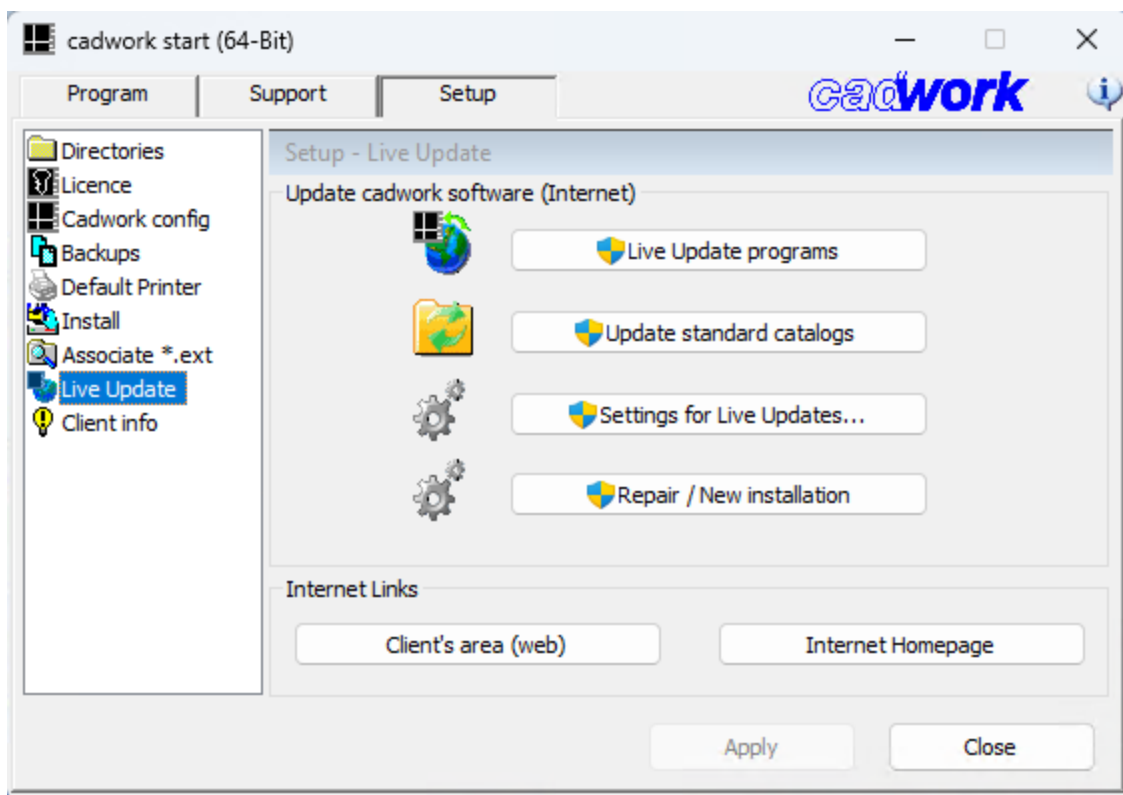


Fig. 11: LiveUpdate

5.11 Client Information

Client information can be entered on this tab. The **Nickname** and **Password** fields can be used to configure automatic access to the clients area on the Cadwork website.

The screenshot shows the 'cadwork start (64-Bit)' window with the 'Setup' tab selected. The 'Client info' section is active, displaying various input fields for client information. The 'Client nr' field is pre-filled with '14'. The 'Support from' dropdown menu is set to 'CA - Montreal'. The 'Zip/City' field is empty, and the 'United States' dropdown menu is open. The 'E-Mail' field is empty. The 'Nickname www' and 'Password' fields are empty. The 'Apply' and 'Ok' buttons are at the bottom right.

Field	Value
Client nr:	* 14.
Company/user:	*
Support from:	* CA - Montreal
Contact partner:	
Address :	
Zip/City :	
Telephone :	
Fax :	
E-Mail :	*
Nickname www :	
Password:	

(*) Fields with an * must be filled.

Fig. 12: Client Information